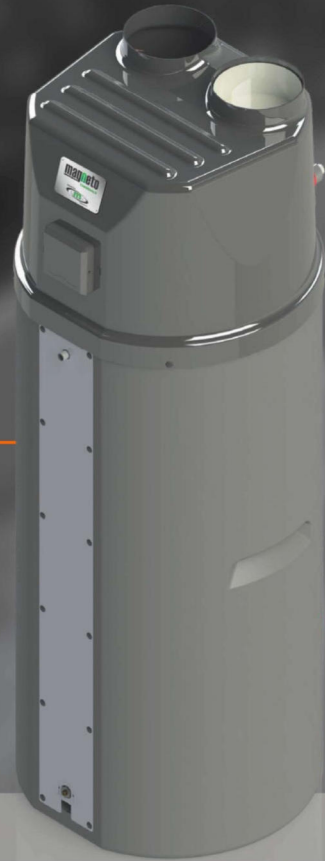


THERMOTANK

HOT WATER HEAT PUMP

220 ELITE - GSG



THERMOTANK

HOT WATER HEAT PUMP



Greysense Group

Crafting Data-Driven Solutions to Empower Your Business

Contact Details

- Telephone: 073 177 4737
- Email: info@greysensegroup.co.za

THERMOTANK

HOT WATER HEAT PUMP

220ELITE - GSG

Technical Data

Model		HP Elite GSG	4 kWh Electric Geyser (Generic)
Heating Method	Heat Pump	Heat Pump & element	Element
Rated Input Power (kW)	0.765	2.765	4
Rated Heating Capacity (kW)	3	4.8	4 (approximate, varies by model)
Rated Current (A)	3.5	12.6	17.4 (assuming 230V supply)
Power Supply		220-240V /50Hz	220-240V / 50Hz
Auxiliary Heater		Element 2kW	N/A (element is primary heater)
Refrigerant		R-410A	N/A (not applicable for element)
Water Tank Empty Volume (L)		220L	150-200 L (common sizes)
Water Tank Material		Roto Moulded Plastic	Steel with vitreous enamel lining
Water Inlet Connection		3/4" BSP	3/4" BSP
Water Outlet Connection		3/4" BSP	3/4" BSP
Insulation Thickness		50mm	50mm (standard)
Water Heating Coil Pressure Rating		1000kPa /10BAR /14psi	N/A (not applicable for element)
Tank Pressure		Atmospheric	High Pressure (up to 600kPa)
Water Heating Coil Material		304 Grade Stainless Steel	N/A (not applicable for element)
Condenser Coil Material		304 Grade Stainless Steel	N/A (not applicable for element)
Water Max Output Temperature		50-70 Degree (adjustable)	60-70 Degree (adjustable)
Solar Compatible		Yes	Yes (for solar-compatible models)
Air Duct Size		180mm	N/A (not applicable for element)
Fan Motor Type		190X80	N/A (not applicable for element)
Fan Power Input		25w	N/A (not applicable for element)
Evaporator Size		400mm x 355.6mm x 44mm	N/A (not applicable for element)
Height of Water Inlet & Outlet		1335mm	Variable, model-dependent
Overall Dimensions (LxBxH)		798mm x 659mm x 1781mm	Variable, model-dependent
Unit Weight		92kg	25-35kg (typical range)
Package Size (LxBxH)		710mm x 680mm x 1870mm	Variable, Model dependant

TRACKING



3 YEAR Heat Pump Warranty

10 YEAR TANK GUARANTEE



TRACKING UNIT DATA



- Heat pump system heats water to 60°C
- Super energy efficient - Heat pump uses only 750W of electricity*
- Delivers hot water equivalent to a 220L geyser
- Unique heat-exchange coil to ensure municipal water pressure
- GPRS, SMARThome functionality
- Safe, low-pressure tank eliminates explosion risk
- No limescale build-up
- Complies with Smart Energy building code
- Back-up element for boosted water temperature up to 70°C
- Three year warranty on the electrical components and compressor**

HEAT PUMP PERFORMANCE MONITORING SOLUTION

Both Heat pump and 4kW Geyser Comparison

- Avg per day consumption (7 days)
 - Heatpump - 10.3kWh [6.73-15.72] per day
 - 4kW Geyser - 20kWh [19-21] per day

Savings Calculated ~ 50 - 80%

~ Savings @ 600kWh Standard usage per month
 Residential @ R 978.75 pm ↑ 18% 2024 - R1155.00

Municipality Tariffs		
Range	2022 (R/kWh)	2023 1 July 18.49% (R/kWh)
1-50kWh	R 1.39	R 1.65
51-100kWh	R 1.92	R 2.28
351-600kWh	R 2.26	R 2.67
>600 kW	R 2.50	R 2.97

Cost Calculations	Residential
Geyser consumption for 30days (kWh)	600
Top Tier Calcs 2023	R 1,779.55
55% savings in the top tier	R 800.80
Difference 2023	R 978.75
Top Tier Calcs 2024	R 2,099.87
55% savings in the top tier	R 944.94
Difference 2024	R 1,154.93